

# TO PROTECT LIVESTOCK

GOV. NORRIS GIVES WARNING TO PREVENT "ANTHRAX" FROM ENTERING MONTANA.

## PROCLAMATION IS ISSUED

Disease Has Been rampant in South Dakota Among Domestic Animals—Board of Health Certificates Must Accompany Shipments From Neighboring States—Railroads Warned.

A quarantine proclamation was issued and signed by Governor Norris, yesterday, which prohibits the importation into Montana of animals affected or exposed to any dangerous disease, contagious, infectious or communicable. This has come about through information from the state veterinary surgeon and the live stock sanitary board which is to the effect that extremely and fatal disease known as anthrax is raging in the southern part of South Dakota, where perhaps thousands of cattle, swine and sheep are infected, many of which are dying daily.

**Proclamations Is Sweeping.**  
The proclamation is sweeping because it pertains as well to horses, goats, dogs, cats, and any other animal in existence. They shall not be permitted to enter the state from South Dakota, North Dakota and Wyoming. The animals that are shipped in from any of these states must be accompanied with certificates showing that they are free from disease, signed by board of health. It must be further shown that the animals have been within the states mentioned for a period of six months prior to the time of shipment.

**Warns Railroads.**  
The proclamation also warns the railroads and all persons who attempt to bring animals into the state to comply with the statutes of the law.

**Comes Under Act.**  
The mandate comes under the act of March 7, 1907, to establish a live stock sanitary board and to provide for the appointment of deputy state veterinary surgeons, and to provide for the eradication of disease in domestic animals, their quarantine and sanitary inspection.

### GOV. NORRIS APPOINTS CLARKE AS REPRESENTATIVE TO FAIR.

J. E. W. Clarke, of Helena, has been appointed by Governor Norris as the special representative of Montana to the National Negro Fair association to be held in Mobile in the fall of 1909. Mr. Clarke is the owner of the Clarke Hygienic company. The association has been launched for the purpose of gathering the skillful hand work of the negro race in the United States. Thirty acres of land have already been procured and congress will be asked to appropriate \$250,000.

The governors of several states have made their appointments and announcement has been made that the representatives will soon meet in Mobile for a general conference pertaining to the coming fair.

### "DAIRY SPECIAL" COMING.

The dairy special will arrive in this city Oct. 16 and locate near the Union station. All meetings will be held in the passenger coach which will accompany the special. It has been arranged for several demonstrations of the new milking machine. Many people interested in farm work will be on hand to witness the possibilities of the new invention. Stock judging will be done at the special train. There will also be given many lectures during the stay in Helena.

**IF you'll only take the Bitters promptly for poor Appetite, Heartburn, Indigestion, Costiveness, Female Ills and Malarial Disorders, you'll acknowledge it to be the best.**



# High Class

The first thing which impresses a stranger on visiting this store for the first time is the high class FURNITURE, CARPETS, DRAPERIES and HOUSE FURNISHINGS shown here. The last thing to impress him on leaving is, notwithstanding the high quality of the goods carried, are our extreme LOW PRICES.

"Come Where the Best Is Found and the Price Alone Is Poor."

**ARTHUR P. CURTIN**  
Complete House Furnisher, Grand Street

## IF WE MAKE YOUR CLOTHES

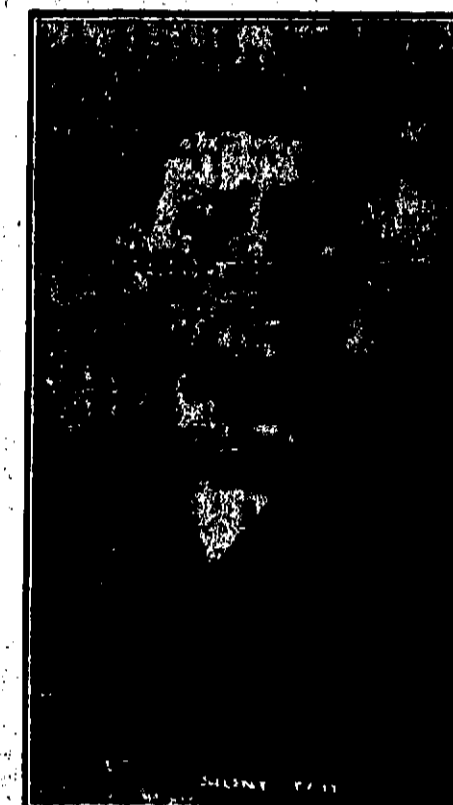
their styles will be faultless to a certainty; they'll keep their shape, they'll wear until you get tired of them, and yet friends and strangers alike will say: "What a well dressed man!" All—or mostly all—in the "know how" of designing, cutting and fitting. Find out here how little it costs to be garbed well.



# The Batch Tailoring Company

### "SILENT" SMITH SCORES HIT AT THE FAMILY.

A splendid bill is being shown at the Family theater this week and the crowds continue to flock to this playhouse. The vaudeville is above the average and "Silent" Smith continues to keep the house in an uproar. His act is a feature of the program and he is compelled to respond to many encores.



"Silent" Taft at Family—Eccentric Comedy Conjuror.

The bill will continue throughout the week with a slight change on Thursday.

### PERSONAL MENTION

**PERSONAL**  
Dr. F. B. Norris has returned from a few weeks' visit on the coast.

A. E. Higgins, of Missoula, is a Helena visitor.

Thomas D. Tuttle, secretary of the state board of health, has returned from Boise, where he delivered an address before the Idaho medical board.

Mayor Joseph Corby, of Butte, arrived in Helena yesterday.

John T. Britt, who has been confined to his home for the past three weeks by illness, is able to be out again and is slowly improving.

### TOWNSHIPS OPEN FOR ENTRIES AT UNITED STATES OFFICE SOON.

Information was filed at the United States land office yesterday morning that plats of townships and fractional townships in the following sections would be open for entries Nov. 19: Township 1 north, range 11 west; township 1 north, range 13 west; township 1 south, range 14 west; township 12 north, range 1 west; township 2 north, range 2 north; township 5 north, range west.

### SIX BELIEVED LOST, ALL ALIVE.

Boston, Oct. 12.—Captain Monroe and five of the crew of the British schooner Sirocco, who were reported to have been lost when their vessel was wrecked off the Florida coast on Oct. 1, were landed today by the fruit steamer Honduras, in Boston.

### FLEET WILL RETURN FROM SAMOA TO HONOLULU

Honolulu, Oct. 12.—A wireless telegram has been received from Rear Admiral Swinburne, commanding the Pacific fleet, returning from its cruise to Samoa with torpedo destroyers in tow, announcing that the West Virginia, Maryland, Pennsylvania and South Dakota, with torpedo destroyers Terry, Proble, Stewart and Hull, will arrive here next Tuesday.

The Tennessee, Washington and California, with the Truxton, Hopkins and Whipple are three days behind and will arrive Friday. Rear Admiral Swinburne reports "all well."

## SENATOR CLARK'S NIECE ENGAGED

ANNOUNCED THAT DANIEL L. WEAVER, THEATRICAL MANAGER, OF SPOKANE, IS LUCKY MAN.

Announcement comes from Butte that Daniel L. Weaver, prominent in social and club circles in Spokane and one of the best known theatrical men in the northwest, has won the hand of the favorite niece of Senator W. A. Clark, of Montana. The engagement is the culmination of a romance which began last June while the young couple were on an outing on the coast. It comes as a distinct surprise to Mr. Weaver's Spokane friends.

Miss Young is one of the most charming and popular young women in Butte, where she has been a society belle for several seasons. Her father is a wealthy mining man, and the young woman is an heiress, besides having a fortune in her own right.

The wedding will take place at latter part of November, at the home of the bride's parents in Butte, where the bride-to-be has lived nearly all her life.

### First Met on Outing.

Last June Mr. Weaver was invited to make one of a party on a fishing and outing trip on Hood river as the guest of Mr. and Mrs. John Cort. Mr. Cort is president of the Northwestern Theatrical association. Several of Mr. Cort's Seattle friends were in the party, also Miss Young.

The outing lasted two weeks and by the time it ended Mr. Weaver had convinced the tall, dark young woman to whom he had devoted most of his attention to the neglect of fishing, that Spokane has a much healthier climate than the mining city in the Rockies.

Since that time Mr. Weaver has been making frequent trips to Butte, but none save a few of his closest friends were let into his secret until it was announced from Butte yesterday.

Mr. Weaver has lived in Spokane for 20 years. He is one of the charter members of the Country club and the Spokane club. He is also well known in business circles, being a member of the firm of Rosenhaupt & Weaver, real estate and insurance.

But it is as a theatrical man that Mr. Weaver has been best known to Spokane, during the last few years. He is a large owner in the Spokane theater, of which he was manager for several years. He is also treasurer of the Northwestern Theatrical association. Mr. Weaver is wealthy.—Review.

## IF WRONG STATE TO PAY ALL EXPENSES

GOVERNOR GILLETTE ORDERS SUSPECTED MURDERER TAKEN TO CALIFORNIA.

San Jose, Cal., Oct. 12.—Governor Gillette has instructed District Attorney Arthur M. Froe that if there is any doubt that William Hatfield, held at Sherman, Tex., on suspicion that he is James C. Dunham, the much wanted Santa Clara county murderer, has not been fully identified, to send for Hatfield and bring him here for identification. The governor stated that the state will pay the expenses of bringing the man here and the expense of taking him back if he proves not to be Dunham. District Attorney Froe stated that he has wired Deputy United States Marshal McAfee, at Sherman, Tex., for further information and that the man will undoubtedly be brought here. A birthmark on Dunham's body, the knowledge of which but recently came to light, has been found to have a counterpart on that of the Texas suspect.

### FLEET WILL RETURN FROM SAMOA TO HONOLULU

Honolulu, Oct. 12.—A wireless telegram has been received from Rear Admiral Swinburne, commanding the Pacific fleet, returning from its cruise to Samoa with torpedo destroyers in tow, announcing that the West Virginia, Maryland, Pennsylvania and South Dakota, with torpedo destroyers Terry, Proble, Stewart and Hull, will arrive here next Tuesday.

The Tennessee, Washington and California, with the Truxton, Hopkins and Whipple are three days behind and will arrive Friday. Rear Admiral Swinburne reports "all well."

## UNIVERSITY FOR HELENA

(Concluded From First Page)

Eighty feet in width and fifty-three feet in depth, connecting by an annex with a rear building, fifty-three feet wide and one hundred feet in depth.

This building will be of either porphyry or brick and the architectural style will be either Oxford Gothic or Greek, whichever being determined upon to be followed throughout in the subsequent buildings, their grouping and the arrangement of the grounds.

**Building Arrangements.**  
The basement will contain two floors, at the upper being the first story of the building. In the basement will be located the laundry, heating and power plant and other rooms which will be used for storage and other purposes. The first floor will contain the offices of the institution and in it the business of the institution will be transacted. Here will be the offices of the president and vice-president, class and lecture halls, reception rooms and in the rear a large study hall.

On the second floor will be the apartments for the faculty, the students' private rooms and lockers. In the rear building will be the chapel, which also takes up the third floor of the rear building.

On the third floor will be more private rooms, prefects' rooms, locker rooms and laboratories.

The fourth floor will be wholly occupied by dormitories.

The grounds about the building will be terraced under the supervision of a landscape architect, trees and grass planted and drives and walks laid out. The campus will also be laid out by a landscape architect.

In the northern wing will be the assembly room and stage 50x60 feet, with a seating capacity of 500 persons. In the center of the building, will be the gymnasium, locker rooms, reading room, baths and other essential features. In the rear building will be the refectory, seating 250 persons, a smaller dining room for college assistants, also a kitchen, bakery and scullery. All will be fitted with the most modern improvements.

The minute details have all been arranged by the master mind which is bringing the plans to a successful culmination and even the members of the faculty have been considered and some of the greatest educators of the age will be brought to this city when the institution is opened.

The college will be opened sooner than could otherwise be the case were it not for the fact that there will be a large building ready for occupancy when the high school is completed and the nucleus of the institution will be started in the building which is now being used as a high school building.

### WAR CLOUD IN EUROPE AFFECTS PRICES TUMBLING

New York, Oct. 12.—The speculative element which has been holding prices of American securities at an advanced price level in the professed confidence in an early restoration of prosperity met a serious obstacle in the flood of liquidation of foreign holdings of these securities which was let loose by the gathering of the war cloud in eastern Europe. The foreign news was received with assurances early in the week and there were frequent and effective rebounds in prices each day when the day's business for foreign account had been concluded.

The cable lines continued to bring orders to sell thousands of shares of American stocks and the active demand in the exchange to effect remittances in payment testified to the reality of the selling and the necessity of finding funds to pay for sales thus accomplished.

The weakness of stocks in the New York market was ascribed quite universally to the technical disadvantage of its position and was not regarded as a reflection of any likely impairment of inherent values of American securities even in the event of a European war.

The course of affairs at home was almost ignored in the dominating influence of the foreign situation.

### DECEIVED MOTHER

Thought She Was Drinking Coffee. It is surprising how many persons have thought they were drinking coffee, when in fact it was Postum.

"The secret of 'good Postum' is in boiling it until it is dark and rich. This brings out all the food value and with good cream one can scarcely tell it from coffee—if at all.

And yet there's no coffee in Postum. It is made of clean, hard wheat and a trifle of molasses. But the way the wheat is roasted brings out a flavour similar to coffee.

"My mother was troubled with indigestion," writes a Kentucky woman, "she made her coffee so strong that no one else could drink it. I knew it was killing her by degrees.

"She would make one pot of coffee to suit the family and then another for herself—much stronger. When she came to visit me I made her coffee while we drank Postum.

"One morning, the pots containing coffee and Postum being alike, got mixed. She drank Postum and said it was 'fine coffee,' had a better taste than hers, so rich and good. Then she began the use of Postum and found she began to get better. Now she is entirely well."

"There's a reason." Name given by Postum Co., Battle Creek, Mich. Read "The Road to Wellville," in packages.

Ever read the above letter? A new one appears from time to time. They are genuine, true, and full of human interest.

### JIMMIE L. PERKINS, WELL KNOWN MONTANA PIONEER, DEAD.

Telegrams have announced the death of Jimmie L. Perkins at Cascade, a well known Montana pioneer. He was one of Helena's largest property holders, especially on the west side. About a year ago he suffered a stroke of paralysis and while the telegram do not so state, the presumption is that this malady proved the cause of death. Mr. Perkins was a Helena visitor just before the State Fair, while Mrs. Perkins was here during that week.

Funeral services will be held at the Episcopal church Thursday morning, Oct. 15, at 10 o'clock, officiating, Rev. P. R. Bateman, officiating. The remains will arrive in Helena this afternoon.

### ARE YOU ONLY HALF ALIVE?

People with kidney trouble are so weak and exhausted that they are only half alive. Foley's Kidney Remedy makes healthy kidneys, restores lost vitality, and weak, delicate people have restored to health. Refuse any but Foley's. Parthen Drug Co.

### LAST OF EARLY GENERATION.

Chillicothe, O., Oct. 12.—Mrs. Ruth Early Nash, sister of General J. Early, of the confederate army, died here last night. Mrs. Nash was the wife of the late Hon. Samuel S. Nash, and is the last of the Early generation of the famous Virginia family.

### Merchants' Lunch at The Atlas.

The "pure food law" is designed by the Government to protect the public from injurious ingredients in foods and drugs. It is beneficial both to the public and to the conscientious manufacturer.

Itching, torturing skin eruptions, disfigure, annoy, drive one wild. Doan's Ointment brings quick relief and lasting cures. Fifty cents at any drug store.

### FACTS ARE STRANGER THAN FICTION.

By special request, has returned to room No. 1 Majestic Hotel, 314 North Main.

## Madam Lucille CLAIRVOYANT AND PSYCHIC ADEPT

By special request, has returned to room No. 1 Majestic Hotel, 314 North Main.



and therefore, she can guarantee you satisfaction. If you have ever read anything about psychic manifestations you will know that a true clairvoyant is born to be one, and unless one is so gifted all the study in the world will not make one.

KNOWLEDGE MEANS SUCCESS. Be sure you are right, then go ahead. Are you thinking about making an investment? Are you figuring on a change of location? Are you in trouble of any kind? Are you about to marry? Then consult Madame Lucille and you will be sure you are right. Her psychic vision is better than your judgment. Readings \$1.00.

## HELENA THEATER

GEORGE A. MINER, Manager.

### Wednesday, October 14

You Smile — You Laugh — You Boor

### "Just Out of College"

By George Ade. 30 Comedians. Original Production.

Prices: \$1.50, \$1.00, 75c and 50c. Tickets on sale at Parthen Bros. 9 a. m. Tuesday.

## Francis D. Jones CIVIL ENGINEER

U. S. Deputy Mineral Surveyor

27 National Bank of Montana Bldg. Helena, Mont.

## RUBBER STAMPS, SEALS AND SUPPLIES.

## HELENA STAMP WORKS

A full line of Stationery, Cards and Religious Artwork.

Phone 276. Write for catalogue.

17 N. Main Street. Helena, Mont.

## IF "BILL" BRYAN OR "BILL" TAFT

Were to discuss the style and quality of Michael-Stern clothing they would be of one opinion—that it is unquestionably the most stylish, best tailored and best fitting apparel to be had ready-to-wear.



## Suits and Overcoats at \$12 to \$35

You will readily understand why our clothing is so popular with the dressy men and young men of town. If you want stylish clothes—clothes that fit right and will wear right, at a moderate price, you will serve your interest best by coming here.

NEW LINE OF EARL & WILSON SHIRTS AND COLLARS. NEW LINE OF NECKWEAR JUST RECEIVED.

## The Jos. Davis Co. GRANITE BLOCK

## OUR MAN SAYS

## They Who Use ELECTRIC IRONS

Use the best and finish early. They who use the old kind, Have to work hard all day. See the difference between The best and the old kind?

## FREE TRIAL. ASK US. HELENA LIGHT AND RAILWAY Co.

## The Pictures That Talk and Sing At the NOVELTY THEATER

Entire Change of Program Today Sadie Hurley & Co., Ross & Stringer, Sidewalk Conversation, "I Told You So," Dear Old Farm.

ADMISSION 10c

## OUR MAIL ORDER BUSINESS

Has assumed considerable proportions. Such orders entrusted to us, be it for a diamond, a watch or a repair job, will receive our most conscientious attention, and we respectfully solicit a trial.

## JACOB A. YUND JEWELER AND BROKER. 22 SOUTH MAIN ST.

## 3%

Money covers may now take advantage of the facilities offered by many of the Commercial Banks of the country to secure INTEREST ON DEPOSITS without undergoing the many inconveniences which are incidental to deposits in Savings Banks. The fact that we pay THREE PER CENT interest on deposits made for six or twelve months may interest you. If so, write us or call on us.

## AMERICAN NATIONAL BANK

Helena, Montana. UNITED STATES DEPOSITORY.

## T. Kain & Sons Granite and Marble Monuments

Prices and Monumental designs sent on application. Par-lous buying work delivered at depot, and placing work in cemetery by much cheaper than the old way, by saving clients' commission.

## BUDWEISER BEER

The only noticeable change in the is the ever-increasing demand for it by our customers. Sold at 5 cents a glass at the Brewery.