

CAPITALIZING CIVILIZATION BY PENWELL CO.

(Continued from Page One.)

years, however, he has cultivated 1,200 to 1,800 acres. His plan is alternative, oats one year and alfalfa the next. In these seven years he has averaged 70 bushels of oats to the acre and the average weight has been 44 pounds to the bushel, running from 42 to 46 pounds. This year Mr. Penwell has 100,000 bushels from his land. He sold the whole crop to the Gould Grain Co., of Minneapolis, and got about \$45,000 for the crop. The Northern Pacific's big capacity cars will load up to 2,000 bushels of oats, so this crop will mean a long haul on 50 cars. But Mr. Penwell also is a sheep, wool and to a slight extent a cattle shipper. He is a pretty good farmer for a railroad to have as a patron. Sheep were recently sold off the Penwell ranch at \$9 a head, against former high record \$2 lower. Wool that last would have brought 20 cents is bringing 30 cents now. Mr. Penwell said that immigration into Montana is not of the "inrush" character but rather of the steady daily arrival kind, and that small farmers who are stayers are rapidly taking up new land.

This article appeared sometime ago and gives Mr. Penwell personally credit for ownership where the Penwell company was the real owner but it serves to show that this Helena company cuts some figure even in the mart of the money kings in New York.

Covers States.

The firm's activities know no exclusive location. Its sign is seen in all counties of the state and many of the cities. Its greatest holdings in city property are in Helena and comprise the Penwell block, the Blackstone apartments buildings and others. The firm organized the company that purchased, reorganized and now controls The Independent.

"There seemed to be room in Helena for an apartment building, we had the money and the land so we built," explained Mr. Witter of the firm, in talking of the Blackstone apartments. This company is formed of Helena men under the name of the Lawrence company. The same is true of the Sixth Ave Building company, there seemed to be a need in Helena and the firm supplied the demand.

That has been the history of the company since its inception. Whenever a need was apparent, there the company opened shop and began work. The settlement and development of a great state like Montana, equal to many kingdoms of Europe, presents vast opportunities for the investment of capital. Capital is notoriously timid. It needs to be encouraged by trust in men handling it and by early successes. These are both supplied by the Penwell company. It has been successful with such capital as has been entrusted to it, it has shown a keen foresight into possibilities of the state and it is equipped to take advantage of any opening that may present itself. The firm's charter permits almost any kind of commercial, financial or industrial activity and it is doubted if there is another partnership in the United States that can show such a diversified line of dealings and such uniform success in each.

Senior Partner.

Lewis Penwell, the senior partner, has become a national figure in development work. Without seeking such honors his handling of affairs in Montana has attracted the attention of big men in other places; their requests for co-operation on his part has brought to Helena the honor of numbering among its citizens one of the national leaders in commercial affairs.

When the Northwestern Development league, formed to exploit the resources of Montana, Washington, Oregon, Idaho, North and South Dakota, Minnesota and Alaska, held its first meeting Mr. Penwell was unanimous choice for president. Mr. Penwell's intention at the outset of his career was to practice law. He served as assistant county attorney in Helena but was defeated when he ran for the county attorney's office two years later. He later became interested in the sheep business and has expanded that tendency into the present business of varied activities.

Mr. Penwell has won high distinction in the business life of Montana, and is deserving of the generous recognition and universal acknowledgment of a career resplendent with honorable achievements, distinguished for its notable success and marked by motives of highest integrity.

A conspicuous figure in the city and state, Mr. Penwell is a director in the Montana State Fair and Exposition, the Helena Commercial club, the Union Bank & Trust company, and the National Warehouse & Storage company of Chicago. His influence and initiative were largely instrumental in making possible Helena's beautiful Placer hotel, and his many acts of whole-souled enthusiasm for the city and state, have been characterized by a practical spirit of loyal and a conscientious service in fostering the development of Helena and the state.

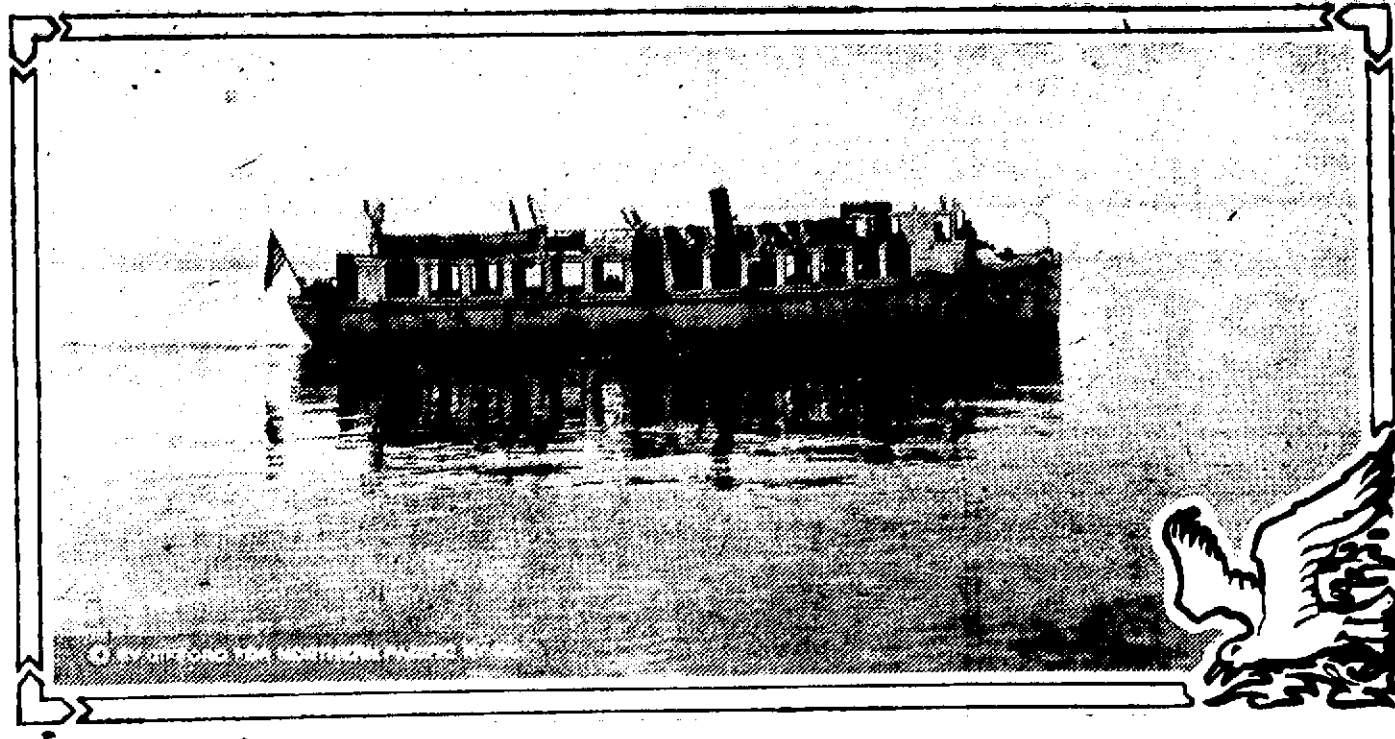
SITTING IN.

Mrs. Goode—Is your husband out much at night?
Mrs. Decker—I suppose so. He says he is much luckier in the day time.

HIS GRATITUDE.

Wife—I shall speak to Mrs. Smith for not having us at her reception.
Bored Hobby—Yes, thank you.

ON YELLOWSTONE LAKE—NO SUBMARINES FEARED



COUNTY OFFICIALS

ALGERNON J. DUNCAN CLERK AND RECORDER

"Montana is the third state in size in the union and Lewis and Clark county is one of the most flourishing districts in the state," said County Clerk A. J. Duncan, "and Helena stands out as a city of splendid buildings and magnificent homes."

A popular official of Lewis and Clark county and numbered with the well qualified men in public office of the community, A. J. Duncan is now serving his third term as county clerk. Reared in this locality and educated in Helena, A. J. Duncan is thoroughly familiar with local conditions and in every way is equipped to give his constituents a service of the first rank.

Mr. Duncan has filled the office of city treasurer and was deputy county clerk and in both offices won the approval of the public. Last fall he was returned with a good majority to the office of county clerk for the third successive term and is performing his duties with the same conscientious attention to the responsibilities of his office.

"Based on official records Lewis and Clark county is one of the fastest growing sections in Montana," said Mr. Duncan, "and it is gaining in prosperity and population along with the whole northwest country."

JUDGE R. LEE WORD OF DISTRICT COURT

"Prosperity abounds throughout the United States, and Montana is teeming with positive development," said Judge R. Lee Word, recently, "and in the city of Helena new activities show progress and advancement on every hand."

Judge Word is an honored member of the Montana bar and has won distinction and eminence as a jurist of the state.

A native of Montana and a member of one of the foremost families of the northwest, Judge Word is a son of the late Samuel Word, one of the notable figures in the history of the state and a pioneer who located in Virginia City in 1863.

Judge Word received his early education in the public schools of Montana, and later attended the Ann Arbor high school and the Phillips Exeter academy. He is an alumnus of the Columbia law school, and in 1889 was admitted to the Montana bar, and for seven years practiced law in Helena. In 1900 he was appointed associate justice of the supreme court to succeed W. H. Hunt, and at the expiration of the term again returned to the private practice of law.

Judge Word was appointed to the office of district judge in 1914 by the governor, and last fall was returned to the office by a large majority as the democratic candidate for a term of four years, and is rendering distinguished service to the community.

"Helena is justly proud of her school system," said Judge Word, who has always been active in educational affairs of the city, "and I believe this accounts for so many wealthy families coming to Helena to make their permanent homes here."

LESTER H. LOBLE COUNTY ATTORNEY

"The time is approaching when Helena will greatly utilize its abundant electric power for industrial development," said County Attorney Lester H. Loble, "and undoubtedly the city will become a manufacturing and milling center."

Among the progressive young men of the locality, Lester H. Loble is prominent in professional and public activities of the community. Elected last fall to the office of county attorney, he is serving his responsible position with ability and tact, and is one of the best known young lawyers of the county.

Mr. Loble was born in the city of Helena and received his education in the schools of this community and is a graduate of the New York University Law School. Following his graduation Mr. Loble spent some time in legal work in Wall street and gained a valuable experience in close

association with the most brilliant lawyers of the United States.

After his nomination last year on the democratic ticket Mr. Loble made a splendid campaign in all sections of Lewis and Clark county and was elected by a good majority and is giving the people an administration of justice, economy and service.

"Lewis and Clark county is advancing in wealth and importance," said Mr. Loble, "and is one of the great counties of the state in the magnitude of its mineral and agricultural interests."

EDWARD J. MAJORS SHERIFF OF COUNTY

"Lewis and Clark is one of the largest counties in the state of Montana," said Sheriff Ed J. Majors, "and it is notable for its law abiding citizens and the absence of flagrant violations of the law."

Mr. Majors was raised in Montana and secured his schooling in this state, and has made Helena his home the greater part of his life.

Mr. Majors had been a street car conductor in the employ of the local company previous to his election last fall to the office of sheriff of Lewis and Clark county. A democrat of strong party affiliation, Mr. Majors' nomination was a popular one and he was elected to the office of sheriff with a substantial majority.

Since taking over the responsibilities of the office in January Sheriff Majors has increased his popularity, and he is recognized as one of the most competent officials the office has held. He has 10 regular deputies and 10 special men, and is giving the county a service that is meriting the praise of the community.

"Numerous evidences go to show the steady development of Helena," said Sheriff Majors, "and none the least of these is the extension of our paved streets and the improvements being made in store fronts and the many changes in business places."

CHARLES H. MARTIEN COUNTY ASSESSOR

"There is a solid unity of spirit among the business men of Helena," said County Assessor C. H. Martien, "and a concerted effort to forward the welfare and best interests of the whole community."

For more than a quarter of a century C. H. Martien has been a resident of the community and is the owner of a ranch near Nelson and is now serving his third term in the office of county assessor. He is a staunch democrat and a popular official of the county and at the last election in November received the largest majority among the candidates. Mr. Martien is filling the position with commendable performance of duty, and has given the people of Lewis and Clark county the character of service that will always meet with popular approval.

"Montana is a wonderful producer of wealth," said Mr. Martien, "and is steadily gaining in valuation and this county is one of the most valuable in the state."

WILLIAM A. MOORE COUNTY TREASURER

"The splendid record of development experienced by Helena in the past 10 years," said County Treasurer William A. Moore, "is certain to be duplicated in the next decade with even greater prosperity and building activity."

Mr. Moore is well able to speak of the city and its future after a long residence in the community. He is a native of the Empire state and more than 20 years ago came to Montana and opened a stationery store in Helena. The W. A. Moore Book & Stationery Store was founded by the county treasurer and is one of the best known business houses of the kind in the district. Mr. Moore sold the business last year and has since been nominated and elected on the republican ticket to the office of county treasurer. He assumed possession of this office in March, 1917, and is counted with the efficient and capable men holding positions of responsibility and trust.

"Prosperity prevails throughout the whole state," said Mr. Moore, "and it is only reasonable to believe that Helena will continue as a growing city."

LEWIS AND CLARK COMMISSIONERS

"So many indications give promise of continued development in Helena and the county," said Chairman John Larson of the board of county commissioners, "that I am convinced that this is to be a banner year in all branches of trade."

The Lewis and Clark county commissioners include Chairman John Larson, W. M. Biggs and George W. Lanstrum, and is one of the most important public bodies in the state. The present commission has been especially active in promoting the good roads movement and the advancement and progress of the county in material ways and is an influential organization in aiding the growth of the county and state.

John Larson.

John Larson has long been active in the affairs of the county and for many years lived in Marysville. He is chairman of the commission and is now serving his second term and was re-elected two years ago for a term of six years after having completed a popular and valuable service in the office for a full term.

W. M. Biggs.

W. M. Biggs is one of the best known real estate and insurance brokers in the city and has offices in the Kohrs block and enjoys a thriving business. Four years ago Mr. Biggs was elected to the office of county commissioner for a term of six years, and is a man of ability and experience and is giving conscientious service to the public.

"My sentiments regarding the future of Helena are well known," said Mr. Biggs, "but I will make it emphatic by saying that no community in the state offers more advantage."

There are very few vacant store rooms or houses in Helena.

ous opportunities for investment than Helena."

George W. Lanstrum.

George W. Lanstrum was appointed a member of the county board by the district court to fill the vacancy caused by the resignation of Rolla Duncan. The appointment holds good until a commissioner is elected at the general election in the fall of 1918, who will take office January 1, 1919. Mr. Lanstrum has been identified with public affairs in Helena for several years. Under an appointment by President Taft, Mr. Lanstrum was postmaster of Helena for four years and made a creditable record. Prior to that time he had served as under sheriff with former Sheriff Mart Higgins. Last fall Mr. Lanstrum was a candidate for the lower house of the legislature and received one of the largest votes cast, attesting his popularity among the voters.

The commissioners of Lewis and Clark county have given every cooperation to the commercial, industrial and mineral development of the county, and welcome suggestions that will aid the farmers and stockmen of the district. No organization is more earnest in its efforts to build up the community and interest investors in the possibilities of the locality than the commissioners of Lewis and Clark county.

SIDNEY MILLER REGISTER OF LAND

"With a wise development of Montana's resources," said Sidney Miller, register of lands, "the future of the state is absolutely assured and the strengthened conditions now prevailing on all sides gives encouraging hope for a remarkable era of progress and expansion."

Splendidly equipped from a long and varied experience in public office, Sidney Miller is thoroughly qualified to fill the office of register of lands. He was clerk of the courts in the county court house for four years, and for four years was clerk and recorder and for the same length of time was a member of the county assessor's staff.

Now serving his second term in the position of register of lands, Mr. Miller was reappointed by the governor in January, and few selections of the chief executive have been more popular.

"Montana has in its great mining, agricultural and live stock industries," said Mr. Miller, "a powerful element for stimulating progress and enterprise, and the foundation of permanent prosperity."

Along the mountains near Helena are many small canyons giving ideal sites for dairying and Helena is an excellent market.

HEARING IS BELIEVING

Teacher—Rachel, use indigo in a sentence.
Rachel—(after much thought)—The baby is indigo cart.

THOMAS C. POWER TRADE, INDUSTRY

"Montana's growth in industrial, commercial and financial lines has been wonderfully rapid," said Thomas C. Power, "and the future presents possibilities too vast to be even considered outside of dreams. Achievements of an astonishing character are certain of accomplishment within the present era in this state in all lines of human endeavor."

Mr. Power has been an eminent figure in the commercial and industrial advancement of Montana for the past half century. His affairs have progressed with the affairs of the state and the success of the state is reflected in his personal success.

A native of Iowa and a son of Irish parents, Mr. Power is descended from a race of men whose names emblazon the pages of history and whose deeds will forever remain in the hearts of the American people.

In his boyhood days T. C. Power worked on his father's farm in Iowa and attended the rural district school, and for three years studied civil engineering at Sissinawa Mound college in Wisconsin.

It was while in the service of the government as a surveyor that the young man decided on Fort Benton as the scene of his initial enterprise in the business world.

Settled at Fort Benton.

With the first shipment of merchandise by steamboat up the Missouri river in 1867, the nucleus of his business institution was formed, and with each succeeding year this has marched forward with the eventful history of Montana until today the enterprise stands pre-eminent among the big mercantile organizations of the great west.

Mr. Power has steadily broadened his financial and industrial influence into a commanding place in the country, and the potential and vigorous expansion of his numerous enterprises is without a parallel in the business annals of Montana.

There is no halting in the progress and upbuilding of the extensive mercantile houses established throughout the state, and there is no method which savors of originality and efficiency that is not given serious consideration.

Mr. Power has always been a steadfast American and has represented the state of Montana in the United States senate, where he served his constituency with dignity, honor and patriotic zeal. He was the founder and is the president of the American National bank of Helena and is the owner of the big Power block in which this solid bank is located, and his extensive financial interests in this state he considers the most significant assets in his possession.

There is no industrial branch of the state in which his interests and influence do not extend, including as they do the oil and lumber business, live stock, wool, elevators and flour

mills, as well as the large commercial and agricultural properties.

The T. C. Power company and its associated corporations provide employment for nearly 600 industrious people and have a far-reaching effect on the prosperity and development of the entire state. The practical results in furthering the substantial growth of the community and the idea of service ever dominant, the T. C. Power corporations are among the most potent factors in building up the commercial, financial and industrial prestige of Montana.

"I predict a future of substantial development for Helena and the whole state," Mr. Power said, "and few communities of the country give more solid indications of a continued prosperity than the city of Helena."

EAST HELENA CENTER OF THRIVING COUNTRY

The East Helena Commercial club has been looking over its field, five miles east of this city, and practically a suburb of Helena, and finds abundant reason why that place should do business.

In the fertile adjacent valley there are 250,000 acres of land, of which 65 per cent is cultivated. The lands are sheltered by mountains, and have abundance of mountain water.

Black wheat rust and potato blight are unknown. All small grains do well; also the various domestic hay and grazing grasses, potatoes, peas, and other vegetables. Here is the "Home of the Great Big Potato," that has been so much advertised. These potatoes, of the very finest flavor and texture, produce at the rate of 200 to 600 bushels per acre.

This region is very advantageous for dairy farming. On the forest reserve nearby, 19,110 head of cattle and 82,850 sheep were grazed last year. That gives some idea of the opportunity for livestock growing and extent of wool production in this region.

The wool from those sheep should be manufactured in Helena. There are big business chances in Helena's commercial district, and this a very desirable place for "live wire" men and women to come for opportunities that go with courage and enterprise, and some capital.

The view of the Prickly Pear valley from the Grand Canyon boulevard running along the side of the mountain above the city is worth a trip to Helena just to enjoy.

Helena is noted for its beautiful private residences, well kept lawns, street parkings and trees.

All scenic points near Helena, of which there are many, are reached by the street car system.

Helena has two national banks, two trust and savings banks and one savings bank.

Many ornate and attractive church buildings add to the attractiveness of Helena.

American Smelting & Refining Company

East Helena Plant

Purchasers of Gold Silver and Lead Ores

Rates quoted upon application to:

F. M. SMITH, Manager
East Helena Montana