

Loving history

Award-winning HMS teacher passes on passion / 7A

Fighting the flu

St. Peter's Hospital staffer answers commonly asked questions / 1C

INDEPENDENT RECORD

TUESDAY, DECEMBER 16, 2003 • HELENA, MONTANA • VOL 60, No. 8 • FIFTY CENTS

U.S. exploits info after capture

Key arrests made from documents found in Saddam's briefcase

By JIM KRANE
Associated Press Writer

BAGHDAD, Iraq — The capture of Saddam Hussein is providing intelligence that has led to the arrests of key figures in the anti-U.S. insur-

gency and a clearer picture of what role the ousted dictator played, a U.S. general told The Associated Press on Monday.

The intelligence gleaned, some of it from Saddam's document-filled briefcase, has also given the U.S. military a far clearer picture of the guerrillas' command-and-control network in Baghdad, and has confirmed the existence of rebel cells

INSIDE

● Iraqi police station bombed/2A

● Saddam's hideaway/10A

Division said in an interview with AP.

The division's intelligence analysts were able to match

whose presence was previously only suspected, Brig. Gen. Mark Hertling of the U.S. Army's 1st Armored

the intelligence from Saddam against its database of insurgent suspects, Hertling said. As a result, the division was busy making arrests and

More CAPTURE, page 10A

AP photo

Saddam Hussein's picture covers the front of every Iraqi newspaper, Monday.



AN IR SPECIAL REPORT Lindbergh landed in Helena

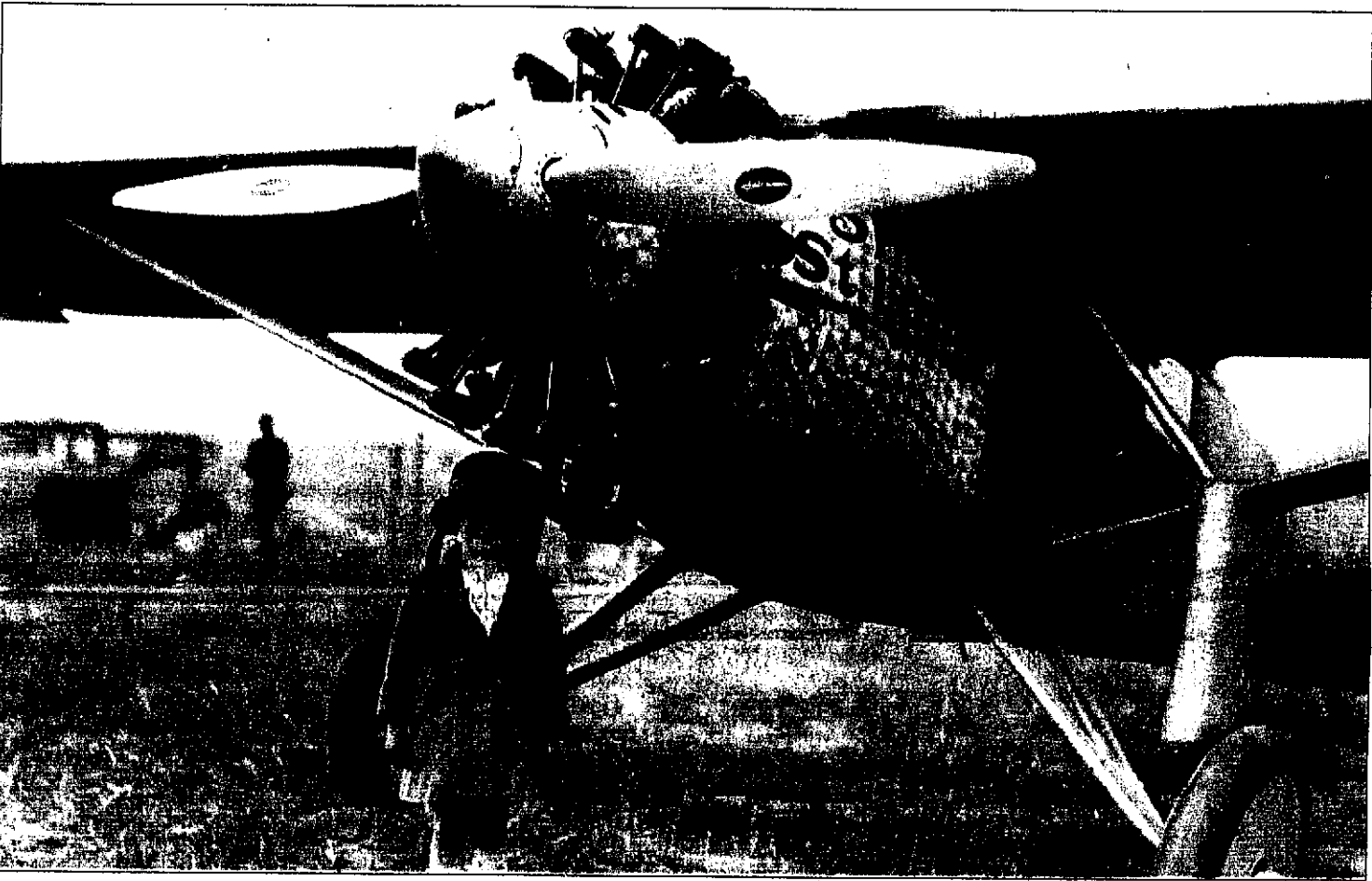


Photo courtesy of Shirley Clearman

One of the Jorud children stands before the Spirit of St. Louis in Helena in 1927. The photo was taken by Les Jorud, who was a close friend to Helena mayor Christopher Bausch, one of the city's early aviation buffs.

Family's photo album witness to famous aviators

By MARTIN J. KIDSTON
IR Feature Writer

Shirley Clearman isn't old enough to remember the day Charles Lindbergh flew into Helena in 1927.

But at 71 years old she does remember her grandfather Christopher Bausch, a two-term Helena mayor who stood witness to the city's opening chapters of aviation.

Clearman's is a story of family pride, thanks in part to her grandfa-



100 YEARS OF Flight

Second in a 4-part series

ther Bausch who arrived in Helena in 1880 and became the city's mayor 50 years later. In his days, Clearman said, Bausch met such aviators as Cromwell Dixon, Charles Lindbergh and Amelia Earhart during their historic Helena stopovers.

"Whenever they came to town with the planes and stuff, he would get a

Did you know: Ench Warsitz opened the jet age on Aug. 27, 1939, by making the first jet-powered flight over Germany in a Heinkel HE 178.

call and go down," Clearman said. "He thought it was fantastic."

Clearman is proud of the contents of her big black photo album. Among its treasures is a snapshot of a young girl poised before the Spirit of St. Louis. The picture, Clearman said, was taken by Bausch's good friend and photographer Leslie Jorud, who opened a studio on Last Chance Gulch in the 1930s (the business would remain open for 73 years before closing in 2002).

More FLIGHT, page 10A

Poll: 51% support drilling on Front

■ Bush administration has pegged area as important source of natural gas

By JENNIFER MCKEE
IR State Bureau

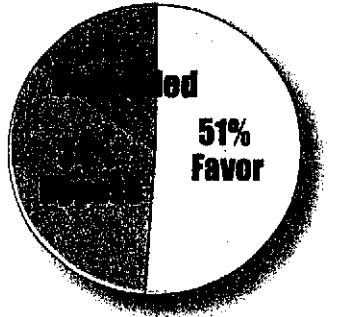
HELENA — Montana voters generally support more oil and gas drilling along the Rocky Mountain Front, a new Lee Newspapers poll shows.

Just over half — 51 percent — of respondents said they support allowing more oil and gas drilling along the eastern-most ridges of the Rocky Mountains running from the peaks of Glacier National Park to Augusta.

Thirty-four percent of voters said they opposed drilling, while 15 percent were unsure.

The poll contacted 625 registered voters across the state and was conducted by Mason-Dixon Polling & Research, Inc., of Washington, D.C., for Lee Newspapers from Dec. 8-10. Respondents were weighted to represent actual voter turnout in various counties in past elections. The poll had a

Do you support or oppose allowing more oil and gas development along the Rocky Mountain Front?



margin of error of plus or minus 4 percentage points.

Among women voters 43 percent were in favor of drilling, 36 percent were against it and 21 percent were unsure. Men were decisively in support of drilling, with 59 percent in favor, 32 percent against it, and only 9 percent saying they were undecided.

Drilling along the range — which is praised for its hunting and hiking as well as scenic vistas — hit the forefront this year with two

More FRONT, page 10A

Montanans divided on ownership of utility

By JENNIFER MCKEE
IR State Bureau

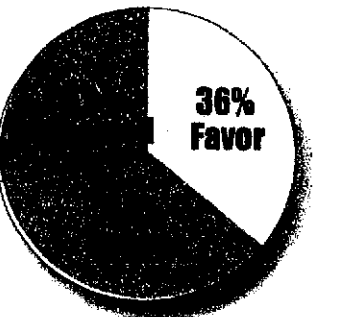
HELENA — Montanans are evenly divided on the subject of buying the state's hydroelectric dams and the electric power lines, a new Lee Newspaper poll shows.

Thirty-six percent of respondents said they supported the state buying back hydroelectric dams now owned by PPL Montana and the electrical wires and poles now owned by North-Western Energy. An identical 36 percent said they opposed the idea, and 28 percent said they weren't sure.

Men supported buying the dams and power lines by a 38-37 percent margin, with 25 percent undecided, while women opposed it 35 to 34 percent, with 31 percent undecided.

The poll of 625 Montana voters was conducted from Dec. 8-10 by Mason-Dixon Polling & Research, Inc., of Washington, D.C., for Lee Newspapers of Montana. It has a margin of error of plus or minus 4 percentage points. Participants were

Do you support or oppose the state buying the dams owned by PPL Montana and the power lines owned by NorthWestern Corp.?



spread from across Montana and chosen to represent the actual voter turn out of counties in past elections.

Both the dams and power lines were once owned by the defunct Montana Power Co., which sold off its utility business in the years after company lobbyists worked to pass electrical deregulation in the 1997 Legislature.

More UTILITY, page 10A

Federal judge to rule on snowmobile plan

By TED MONOSON
IR Washington Bureau

WASHINGTON — A frustrated federal judge questioned lawyers Monday on what would be the implications of rejecting a Bush administration snowmobile plan for Yellowstone and Grand Teton national parks.

U.S. District Judge Emmet Sullivan is set to determine by today if the Bush administration had the right to set aside a Clinton

administration plan to phase out snowmobile use in the two parks.

The Interior Department released the final rules for snowmobiling on Dec. 11. If Sullivan rejects the proposal it is unclear if the Clinton administration rules would be in place or if there would be no rules and therefore no snowmobiling.

Sullivan was angered when a lawyer for the snowmobile industry noted that if his ruling derailed the

snowmobile season, which is set to begin Wednesday, it would financially ruin communities that abut the parks.

"The court didn't create this problem," Sullivan said. "The court did not drag this out until the eleventh hour. This case did not have to conclude on Dec. 15. These issues have been around for at least six years."

Studies conducted by the state of Wyoming and the University of Montana esti-

mate that the communities generate 25 percent of their annual income from winter tourists. Interior Department reports have questioned if curtailing or eliminating snowmobiling would have a large impact on the park.

Wyoming Assistant Attorney General Ted Preston and snowmobile industry lawyer Barbara Miller warned that if the judge's

More JUDGE, page 10A

Inside

- On the Web at www.helenair.com
- Call us at 447-4000

Health/Fitness	1C	Nation/World	2A
Classified	5C	Obituaries	8A
Comics/Crossword	4C	Opinion	4A
Montana	5A	Sports	1B
Movies	4B	Television/Advice	3C
Markets	5B	Weather	2A

Today

Mostly cloudy and breezy

37 29
Precipitation: 10%
Complete weather: 2A



Air quality: 447-1644

Sports

Saints football

Twin brothers; one plays the other coaches

NFL football

Eagles play the Dolphins

